



FEATURES

- HOLSTER FOR THE 1911 GRIP AND RAIL SYSTEM.
- COMPATIBLE WITH MOST RAILED ACCESSORIES ON THE MARKET.
- UNIVERSAL RAIL ACCESSORY FIT.
- COMPATIBLE WITH OTHER MOUNTING ACCESSORIES.
- PATENT PENDING FRAME LOCKING SYSTEM.

SPECS

- WEIGHT: 150G.
- COMPATIBLE WITH THE CC3H AND CC3P.
- HIGH GRADE GLASS REINFORCED POLYMER.
- PASSIVE OR ACTIVE RETENTION OPTION.

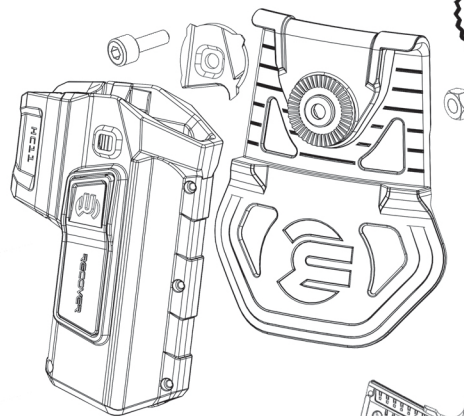
INSTALLATION

- MOUNT THE MEDALLION OVER THE SQUARED HOLE.
- LINE UP THE PADDLE OVER THE SLOTTED GROOVES.
- ADJUST THE CANT OF THE HOLSTER TO YOUR OWN PERSONAL CARRY PREFERENCE.
- BOLT TOGETHER WITH THE SUPPLIED HARDWARE.

IF YOU HAVE ANY QUESTIONS, COMMENTS
OR CONCERNS PLEASE CONTACT US AT:

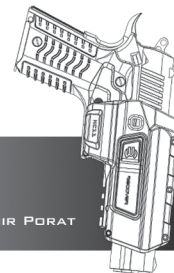


SERVICE@RECOVERTACTICAL.COM



PATENT
PENDING

HC11



DESIGNED BY TAMIR PORAT

**CC3H/P COMPATIBLE
1911 HOLSTER**